



A Weekly Update For The Employees of North Central Health Care



# NEWS YOU CAN USE



## WEEKLY CONNECTION WITH GARY OLSEN

As most of you know, I am a very big Packer's fan. I had written a *News You Can Use* article at the beginning of September as the football season was just kicking off. In that article, I made some predictions regarding the team. I had said that they would end the season with an 8 and 9 record. I had stated that we were the youngest team in the league, and we would have some growing pains, but I would have loved to see us end with that predicted record. Well, the football season is officially behind us now. The Packers are done for this season. The team had their ups and down, but in the end, they exceeded my expectations with a record of 9 and 8....AND they made the playoffs.

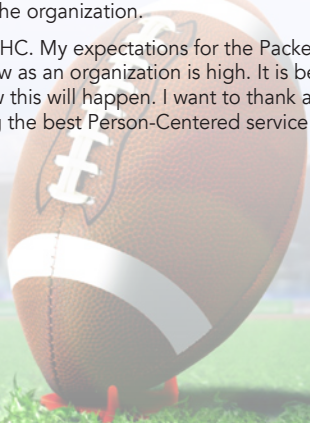
Not only did they make the playoffs, but they beat the Dallas Cowboys and almost beat the San Francisco 49ers.

Just like the Packers, organizations have ups and downs. It is through the resilience of the players on the team that they endure the downs, and make the most of their triumphs. The same can be said for our organization. It is because of the wonderful and committed employees here at NCHC that we overcome any "losses" with resilient wins. We saw just this in 2023, as we had so many wonderful wins. Both nursing homes receiving a 5-Star rating is just one example, and I see many more "wins" coming for 2024.

I also remember commenting about Jordan Love, our new quarterback, and had stated that I thought he was going to be a very good player. I believe that was shown this year. One of our NCHC Core Values is *Accountability*. Jordan Love displayed this Core Value after the San Francisco loss. This is what was written after that loss: "Part of the job of a starting quarterback is to speak with the media following every game, even after brutal playoff losses like this one. But Love didn't sulk. He didn't blame others. He took accountability for the defeat and put the blame on himself, yet again proving why he is such a great leader and teammate." Just like Jordan Love takes accountability as the leader of the team, it is also important for me to be accountable to all of you and the organization.

I am looking forward to another wonderful year here at NCHC. My expectations for the Packers next season is very high, just like my expectations for NCHC to grow as an organization is high. It is because of the wonderful individuals we have working here that I know this will happen. I want to thank all our staff for your commitment to our organization and for delivering the best Person-Centered service possible. I can't wait for more "wins" this year!

*Gary D. Olsen*  
**Gary Olsen**  
Executive Director



- Meet Our New Employees ..... 2
- Blood Drive Sign Up at Pine Crest ..... 3
- Gabbin' with Gary ..... 3
- Employees on the Move ..... 4
- Foodie Forecast ..... 5-6
- Help for the Homeless Donation Drive ..... 7
- Communication Survey Ends This Thursday! ..... 8

Person-Centered

# Shout out

**Sydney Tulpan,**  
Adult Behavioral Health Hospital

Sydney spent a tremendous amount of time and effort in de-escalating an aggressive patient.

**Shared By: Brandi McDonough**

**Occurrence Reporting Hotline**  
x4488 or 715.848.4488

Only significant or sentinel events requiring immediate notification to this hotline.



# WELCOME THESE *New Employees* TO THE TEAM!

These employees were welcomed at Orientation January 29, 2024!

## Mount View Care Center



**Tory Kramer** – CNA



**Madelyn McKenzie**  
– CNA



**Cesar Romero-Alvarado** – CNA

## Food Services – Wausau



**Steffenie Quaintance**  
– Dietary Aide

## Housekeeping – Merrill



**Mya Chrisman** –  
Housekeeping Aide

## Safety & Security



**Yee Yang** - Safety &  
Security Office

## Guest Services



**Marjorie Alvis** -  
Guest Services Rep

## Adult Hospital



**Lindsey Smith** –  
Behavioral Health  
Professional

## Crisis Services



**Autumn Marble** -  
Crisis Professional

## Pine Crest



**Dorothy Anderson**  
– LPN



**Vanessa Birch** -  
Hospitality Assistant

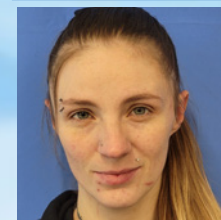


**Lisa Mcanarney** -  
Hospitality Assistant



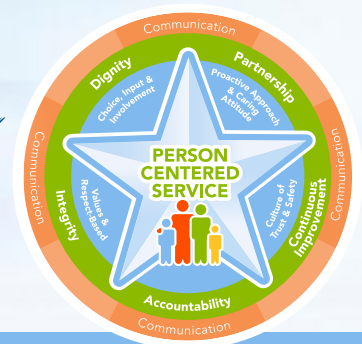
**Monique Riste** –  
CNA

## Food Services – Pine Crest



**Kourtney Moser** -  
Dietary Aide

*We are so excited to have you on our team!*





NORTH CENTRAL HEALTH CARE BLOOD DRIVE

EVERY **DROP** COUNTS



**PINE CREST**  
**FRIDAY, FEB. 9th**  
11AM TO 3PM  
THE CLASSROOM



PLEASE MAKE SURE TO BRING YOUR ID

**APPOINTMENTS ARE APPRECIATED,**  
**SCAN THE QR OR CALL 800-280-4102**

THANK YOU FOR HELPING US SAVE LIVES!

**EVERCON 24**

**MARCH 1-3, 2024**  
**THE FUTURE OF GAMING!**  
**EVERCON.ORG**

CENTRAL WISCONSIN CONVENTION AND EXPO CENTER  
1001 MARBLE F. ST., D  
ROTHSCHILD, WI 54411

**Mark Your Calendar for EVERCON 24!**

Help support our local schools by attending this fun event for the whole family!

In past, Evercon has raised funds to support suicide prevention initiatives locally and at NCHC.

This year, Evercon is supporting Make-A-Wish Foundation!



**UKG NOTICE**  
**Mobile App Updates You Need to Know**



UKG performed an update to the UKG Pro Classic app. Upon logging in to the app, a message may appear indicating that a security update has been completed. To complete the required steps – you need to SIGN IN with the option of SSO Credentials. You should then get prompted for your username and password. Remember this is your norcen.org email address and your password is always your network password. Remember moving forward to always use SSO Credentials bar when logging into the UKG app.

If you have any questions or issues, please contact the HelpDesk at x6710 or 715.261.6710.

**GABBIN' with GARY**

A Monthly Gab Session with Executive Director, Gary Olsen

**FEBRUARY GAB SESSION:**  
**PATIENT FINANCE**

Each month, Gary Olsen will select a manager to participate in Gabbin' with Gary! That manager will be asked to invite one employee from their program to join in.

The trio will connect over lunch.

The topic? *It's up to you!*

**Inspired by Core Values & Committed to Person-Centered Service!**



**We want MORE Awesome People like YOU on Our NCHC Team!**

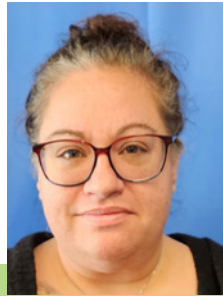
**Be sure to SHARE our Career Posts on Social!**





# employees on the move

Congratulations to these employees for their recent transfer or promotion!



**Jennifer Hagen** transferred from Weekend Warrior LPN to Weekend Warrior RN at Pine Crest reporting to Natasha Sayle effective 1/21/2024.



**Andrew Doster** transferred from Health Information Specialist I to Health Information Specialist II in Health Information reporting to Peyton Stefan effective 1/21/2024.

# congrats!



Please join us for our *Open House*

Monday  
February 26<sup>th</sup>, 2024  
9:00 am-2:00 pm  
*Or*  
Tuesday  
February 27<sup>th</sup>, 2024  
2:00 pm-7:00 pm

820 S. 8<sup>th</sup> Ave  
Wausau Wisconsin 54401

## Think you can't afford to own a home? THINK AGAIN!



If you can answer YES to all of these questions...

### Family Partner Criteria



Do you need improved housing?



Does your income fall within the ranges of the chart on the right?



Are you willing to work with volunteers to build your home?

Family Size	Gross Annual Income
1	\$32,450 - \$38,940
2	\$37,100 - \$44,520
3	\$41,750 - \$50,100
4	\$46,350 - \$55,620
5	\$50,100 - \$60,120
6	\$53,800 - \$64,560
7	\$57,500 - \$69,000
8	\$61,200 - \$73,440

**Register to attend an informational session to learn more about becoming a Habitat partner family!**

**February 7th, 2024  
@ 10:00am**

Location:  
Habitat for Humanity of Wausau  
1810 Schofield Ave.  
Weston, WI 54476

Interpreters:  
Arabic, Turkish, Spanish

**February 13th, 2024  
@ 6:00pm**

Location:  
Habitat for Humanity of Wausau  
1810 Schofield Ave.  
Weston, WI 54476

Interpreters:  
Arabic, Turkish, Hmong

**February 17th, 2024  
@ 10:00am**

Location:  
Marathon County Library/Wausau  
300 1st St.  
Wausau, WI 54403

Interpreters:  
Arabic, Turkish

**Ways to Register:**  
www.habitatwausau.org  
(715)343-4243  
kdrysdale@habitatwausau.org

Approved low-income applicants can purchase a Habitat home, with a zero-interest home mortgage and payments over 30 years. Eligible income limits are between \$32,450 - \$73,440 based on family size.



## APPLICATION PERIOD: CLOSES MARCH 22, 2024



# WHAT'S FOR LUNCH?

WAUSAU CAMPUS EMPLOYEE CAFETERIA  
OPEN TO ALL NCHC & WAUSAU CAMPUS



### BREAKFAST HOURS

8:30 AM – 10:30 AM

### LUNCH HOURS

MONDAY – FRIDAY  
10:30 AM – 1:30 PM  
HOT FOOD BAR  
\$.45/OUNCE  
(Weekdays Only)

### GRAB-N-GO HOURS

MONDAY – FRIDAY  
8:30 AM – 5:30 PM

### WEEKENDS:

GRAB-N-GO ONLY

## THE SANDWICH & SALAD BAR IS BACK!

Make your own cold sandwich with lunch meat & fixins' OR self-serve at the salad bar. Salads are charged by weight.

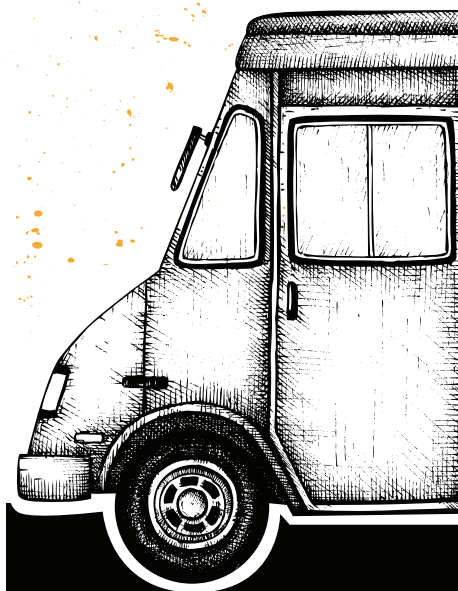
## FEBRUARY 5 – 9, 2024

	MONDAY	TUESDAY	WEDS	THURSDAY	FRIDAY
MAIN	Twice Baked Chicken Breast Mashed Potatoes & Gravy Green Beans	Lasagna Salad Garlic Toast	Apple Butter Pork Loin Stuffing Roasted Butternut Squash	Roast Turkey Mashed Potatoes Corn	Baked Cod Herbed Rice Carrots Rye Bread
SOUP	Cheese Cauliflower Soup	Beef Barley Soup	Garden Vegetable Soup	TBD	TBD
DESSERT	Brownie Bottom Cheesecake	Chocolate Chip Cookie	Snickerdoodle Krispy Bar	Banana Strawberry Cup	Cranberry Crunch

## FEBRUARY 12 – 16, 2024

	MONDAY	TUESDAY	WEDS	THURSDAY	FRIDAY
MAIN	Baked Chicken Drumstick Loaded Mashed Potatoes Carrots	Boiled Dinner Green Beans Dinner Roll	Macaroni & Cheese Beets	Scalloped Potatoes & Ham Brussel Sprouts	Baked Spaghetti (meatless) Breadstick Peas & Carrots
SOUP	TBD	Cream of Tomato Soup	Cream of Broccoli Soup	TBD	Beef Vegetable Soup
DESSERT	Carrot Cake with Cream Cheese Frosting	Pie	Carrot Cake with Cream Cheese Frosting	Brownie	Rice Krispy Treat

# Winter WAUSAU CAMPUS ~~WINTER~~ SUMMER FOOD TRUCKS



## HANUMAN EXPRESS

Wausau Campus  
Thursday, Feb. 8

Mount View Care Center  
Entrance, Door #5

11 am – 1:30 pm

Hanuman Express wanted to celebrate the warm weather and have the food truck visit the Wausau Campus. Future stops will be communicated, if weather will continue to work out for us. Stay tuned to NYCU!

Please note: Food trucks are independently operated and may cancel with little notice. We apologize for any inconvenience.



# THE BISTRO

**NOW OPEN 7 DAYS A WEEK! | WEEKDAYS 7:30AM - 3PM | WEEKENDS: 9:30AM - 5PM**

THE BISTRO WILL BE CLOSED ON WEEKENDS FROM 1-1:30PM TO ACCOMODATE STAFF BREAKS

\*HOT FOOD IS AVAILABLE AT THE BISTRO DAILY UNTIL 2:30PM \*



## SPECIAL OF THE WEEK

### *Reuben Panini*

SLICED CORNED BEEF | SWISS | 1000 ISLAND DRESSING | SAURKRAUT

## LATTE OF THE WEEK



### *Cinnabon Latte*

Caramel & cinnamon paired with steamed milk & espresso, topped with caramel drizzle & fresh whip.

**\$1 OFF LARGE LATTES EVERY MONDAY!**

*\*Please note: All sales subject to Sales Tax.*

## - build your own - BREAKFAST SANDWICH

### PICK YOUR STYLE

EGG + CHEESE ..... 3.00

EGG, MEAT + CHEESE ..... 4.00

### PICK YOUR BREAD

CROISSANT

BAGEL

ENGLISH MUFFIN

### PICK YOUR MEAT

HAM

SAUSAGE

BACON





Collection Boxes will be at MVCC Main Entrance and the Wausau Campus Employee Entrance Door #55

Donate here or local Festival Foods & Walgreens



*Help for the Homeless*

**HYGIENE DRIVE™**

**Feb. 11 -  
Mar. 3**

Help ease the financial strain on homeless and crisis programs in your community.

**Most Needed Items**

- |                   |                   |                   |
|-------------------|-------------------|-------------------|
| Bathroom Tissue   | Diapers/Baby Care | Laundry Detergent |
| Cleaning Supplies | Face/Bath Soap    | Paper Towels      |
| Dental Care       | Feminine Care     | Razors            |
| Deodorant         | Hair Care         | Trash Bags        |

*Donations remain in the community where collected!*



Thanks to our sponsors and event partners!  
Details at **thefamily.net** or 800-236-9364



# EMPLOYEE Communication SURVEY



**Complete by February 8, 2024**

## *NCHC Employees – We want your feedback!*

North Central Health Care is committed to **Continuous Improvement** and **Partnership**. We greatly appreciate your participation in this **brief 2-minute survey**. Your insights into communication at NCHC are essential and all responses are anonymous.

We are challenging our team for 100% participation! The survey results will be presented to all staff during the Spring Employee Updates.

## *3 Ways to take the Survey!*

- 1** Click on the Survey Link sent to your NCHC Email
- 2** Go to any web browser and visit <https://bit.ly/NCHCCommSurvey2024>
- 3** Scan this QR code with your smart phone camera app.



# *Take the Survey Today!*